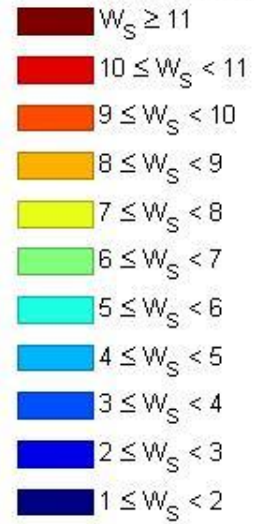


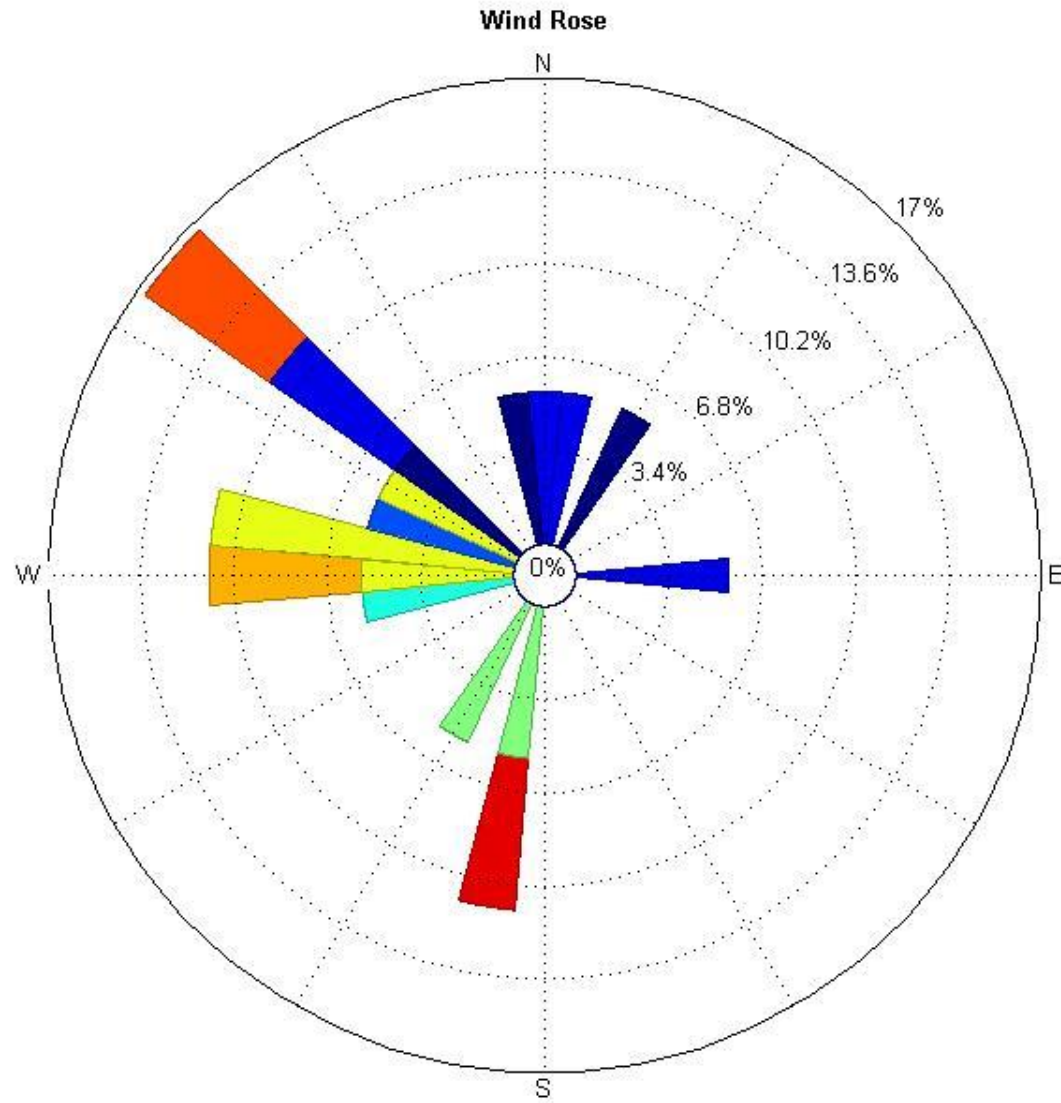
- Fog statistics by Aurelio Barranco, 2016

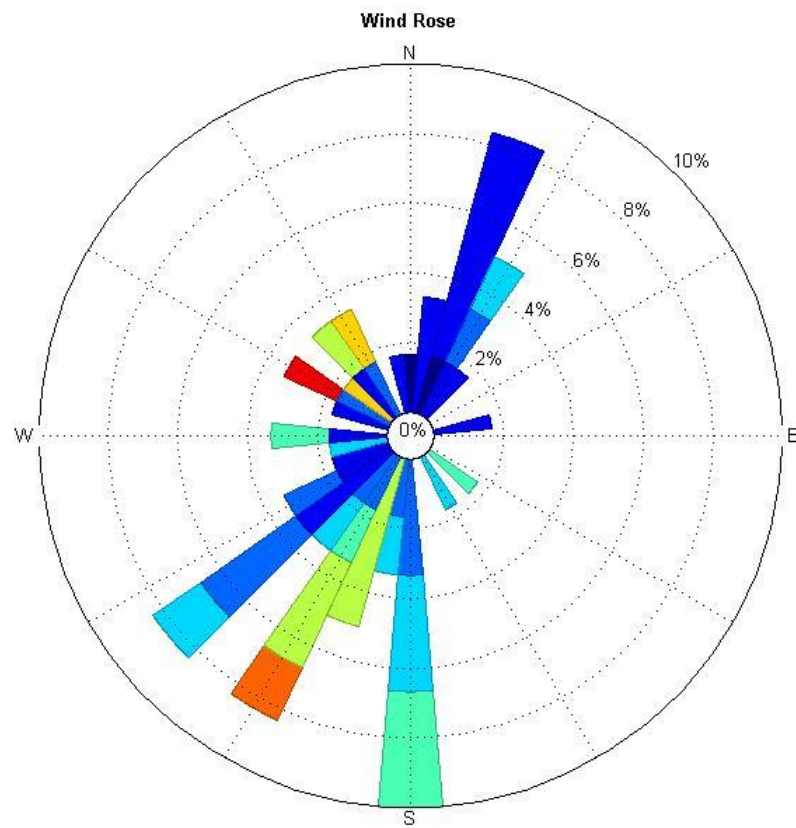
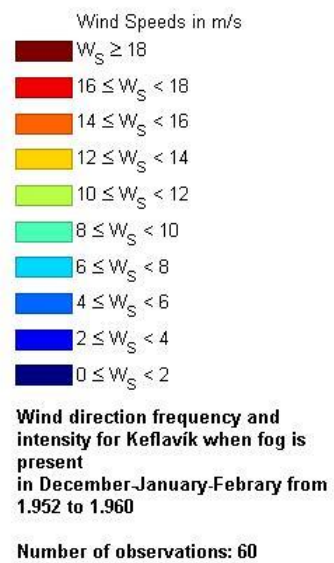
Wind Speeds in m/s

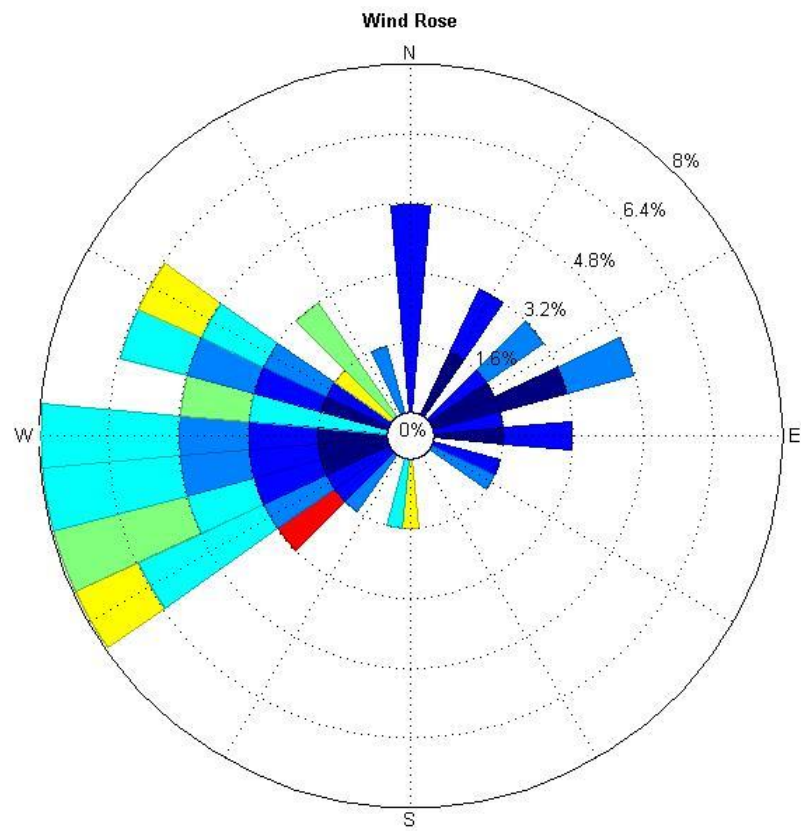


Wind direction frequency and intensity for Keflavik when fog is present in December-January-February from 1.970 to 1.980

Number of observations: 18





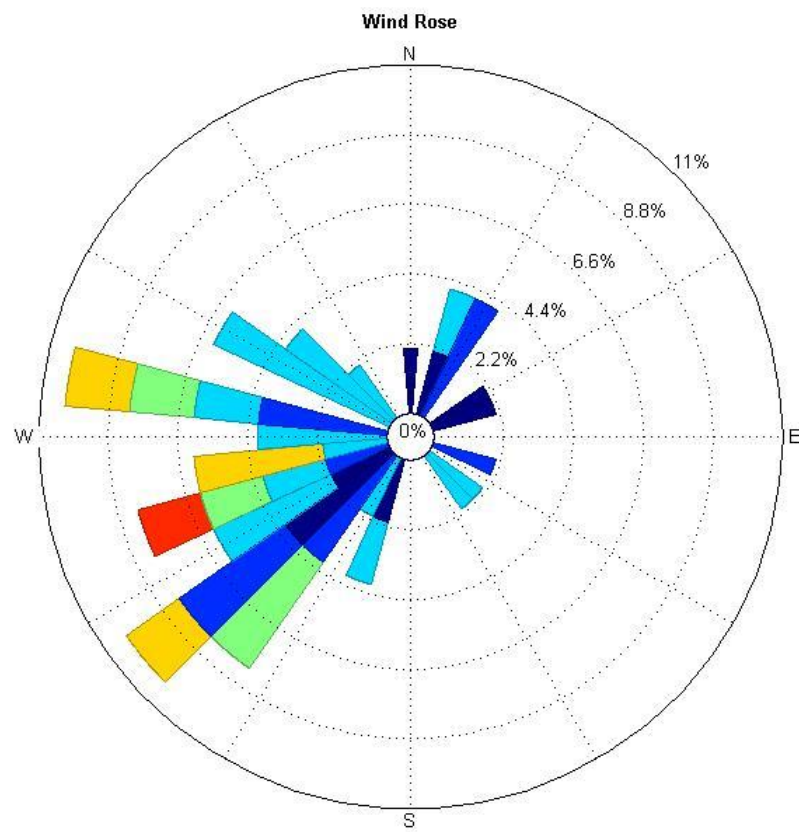


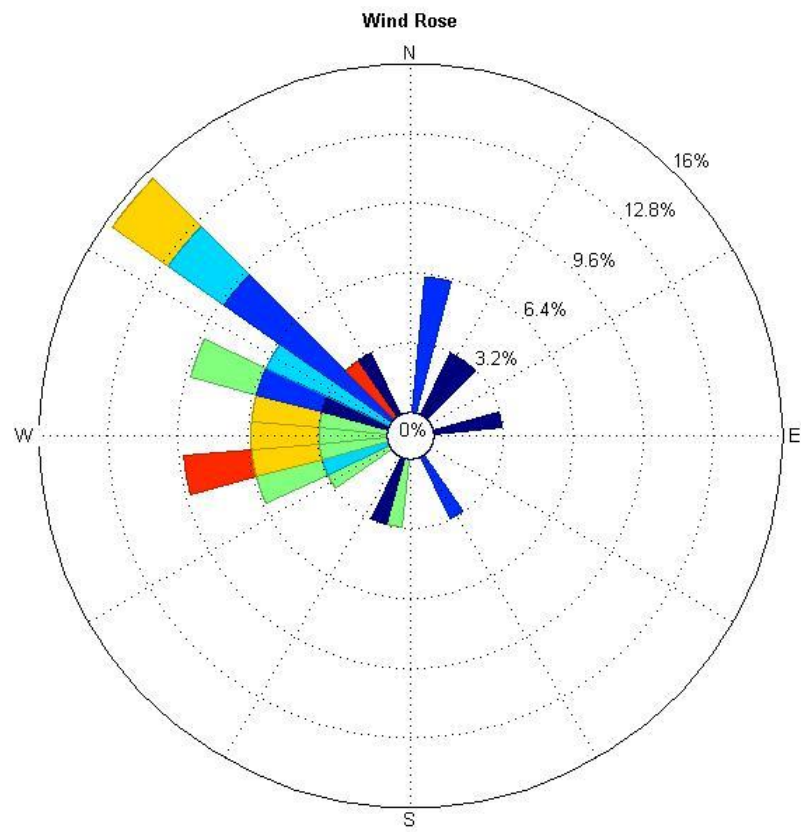
Wind Speeds in m/s

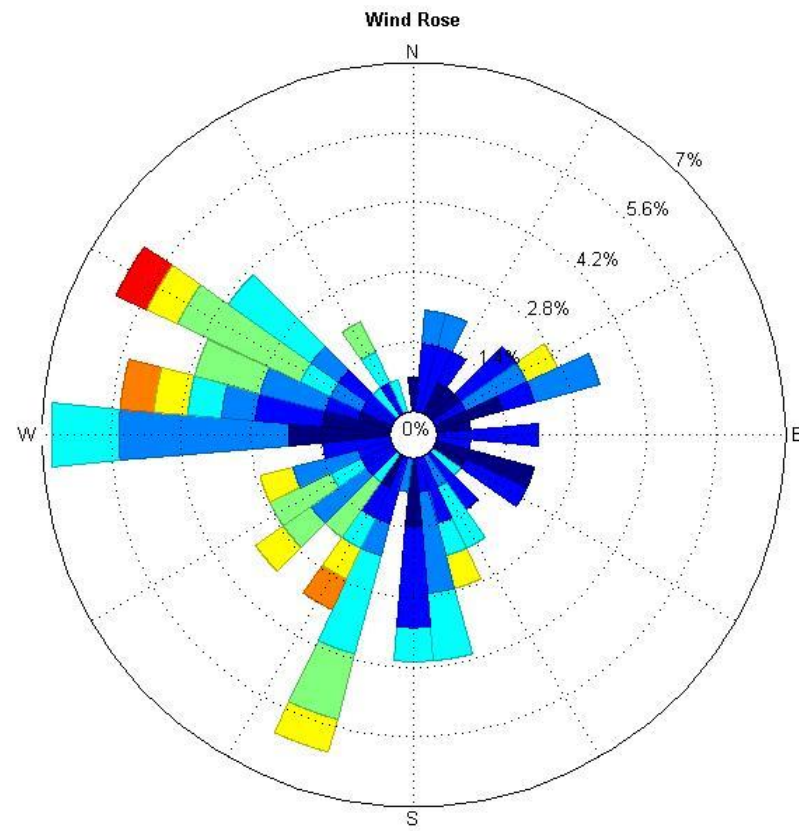
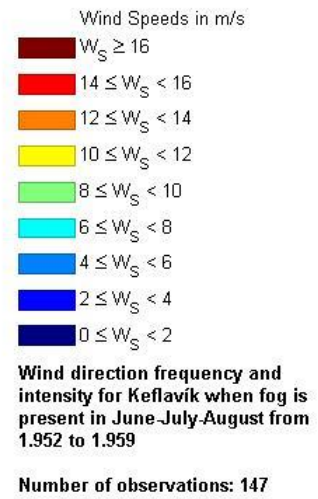
- $W_S \geq 12$
- $10 \leq W_S < 12$
- $8 \leq W_S < 10$
- $6 \leq W_S < 8$
- $4 \leq W_S < 6$
- $2 \leq W_S < 4$
- $0 \leq W_S < 2$

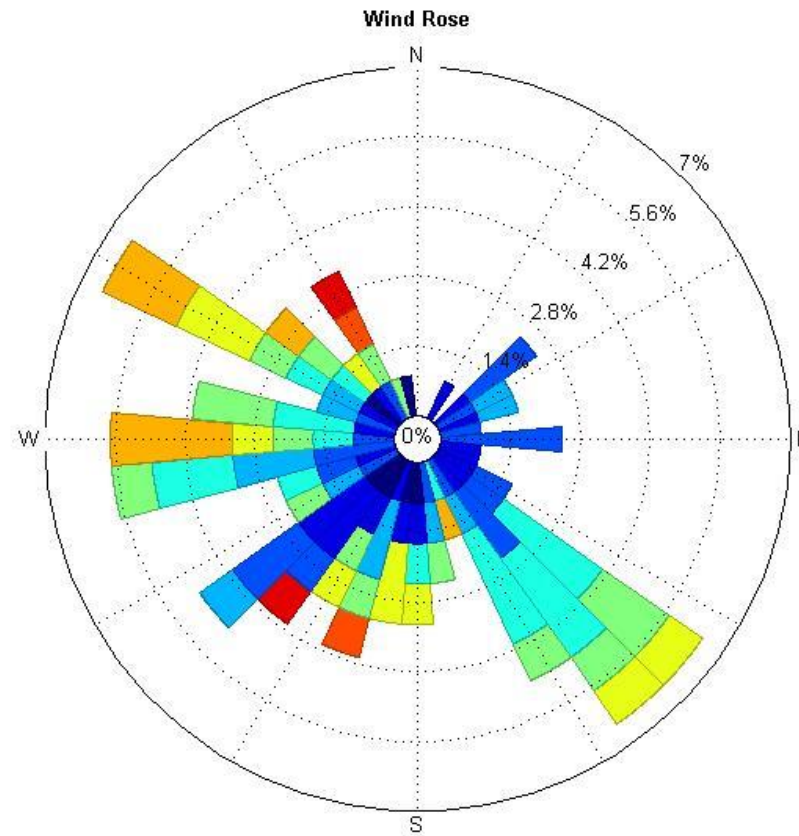
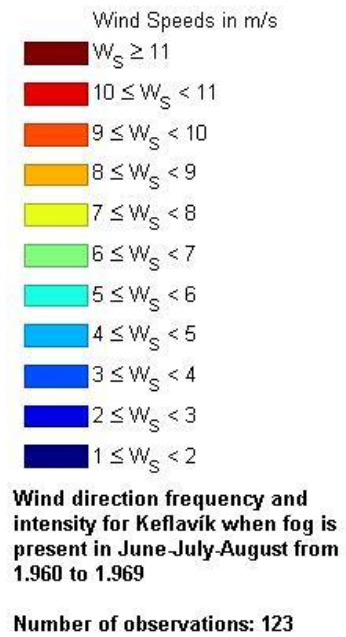
Wind direction frequency and intensity for Keflavik when fog is present in December-January-February from 1.980 to 1.990

Number of observations: 49







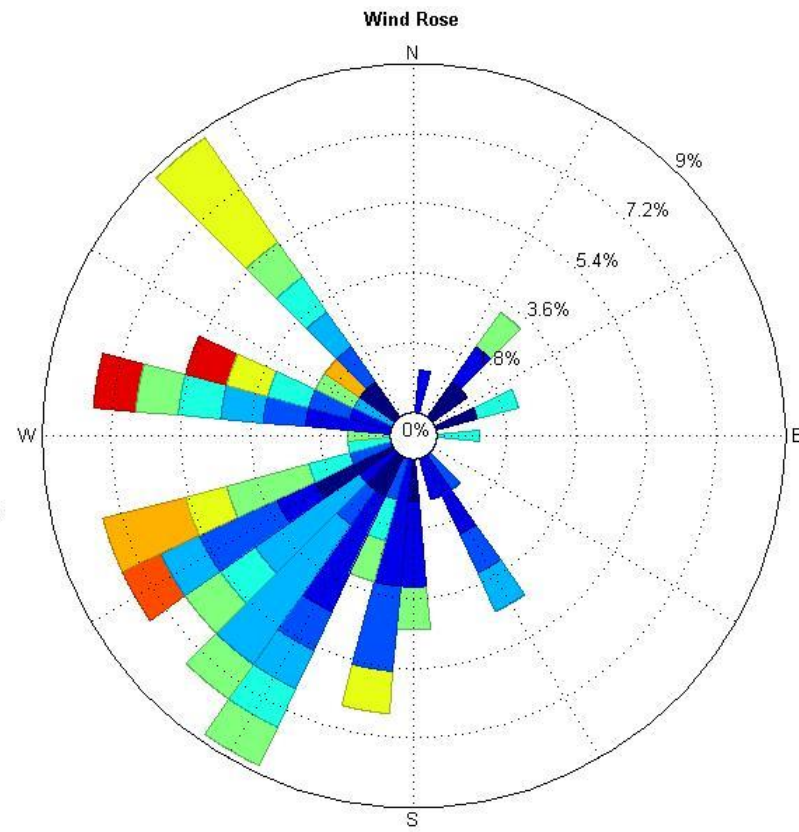


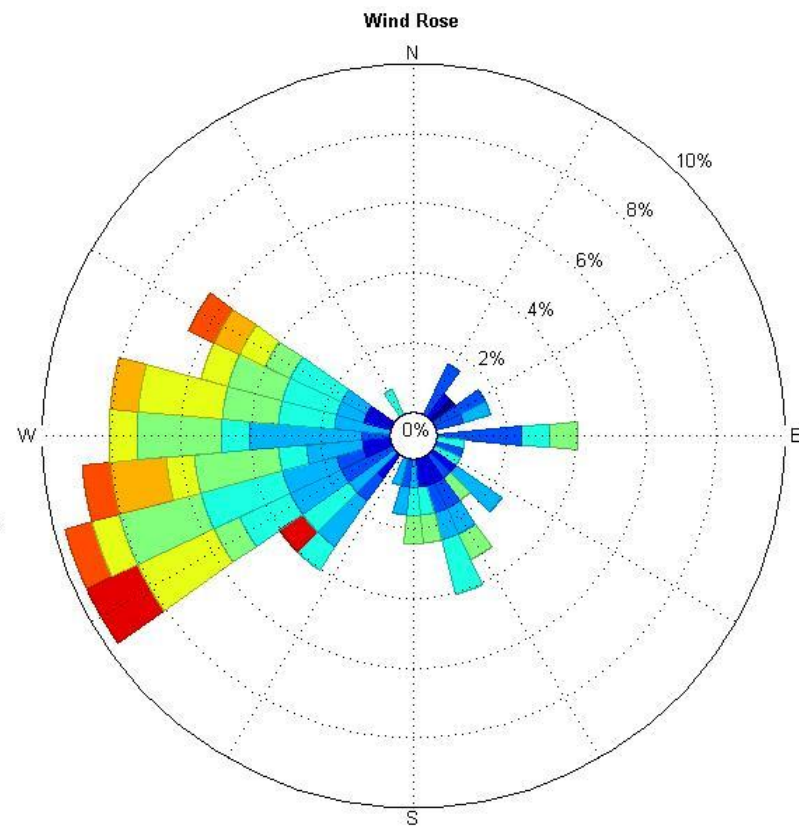
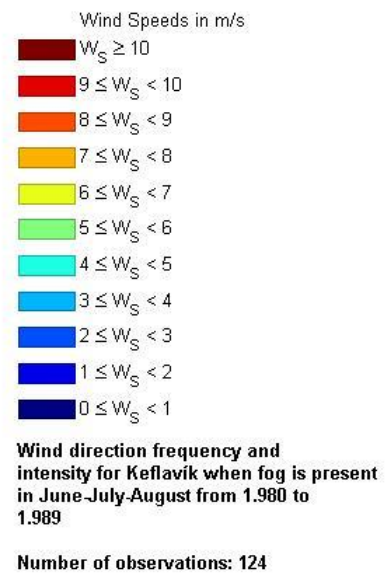
Wind Speeds in m/s

- $W_S \geq 11$
- $10 \leq W_S < 11$
- $9 \leq W_S < 10$
- $8 \leq W_S < 9$
- $7 \leq W_S < 8$
- $6 \leq W_S < 7$
- $5 \leq W_S < 6$
- $4 \leq W_S < 5$
- $3 \leq W_S < 4$
- $2 \leq W_S < 3$
- $1 \leq W_S < 2$

Wind direction frequency and intensity for Keflavik when fog is present in June-July-August from 1.970 to 1.979

Number of observations: 91



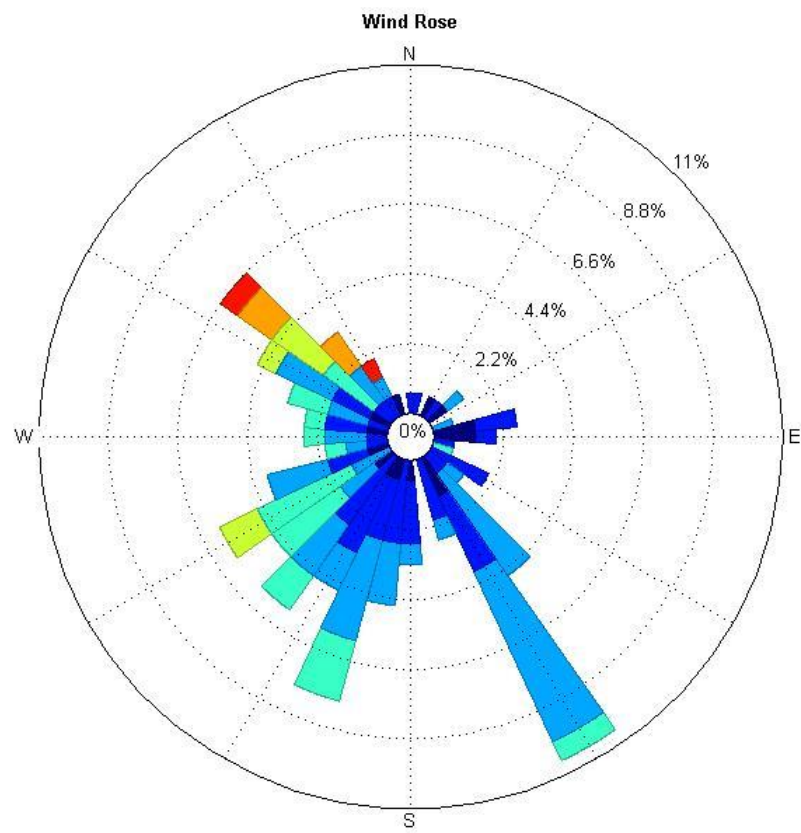


Wind Speeds in m/s

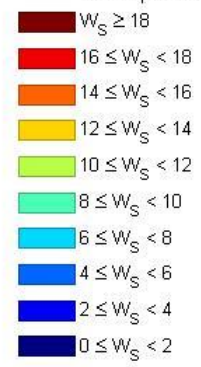
- $W_S \geq 14$
- $12 \leq W_S < 14$
- $10 \leq W_S < 12$
- $8 \leq W_S < 10$
- $6 \leq W_S < 8$
- $4 \leq W_S < 6$
- $2 \leq W_S < 4$
- $0 \leq W_S < 2$

Wind direction frequency and intensity for Keflavik when fog is present in June-July-August from 1.990 to 1.998

Number of observations: 152

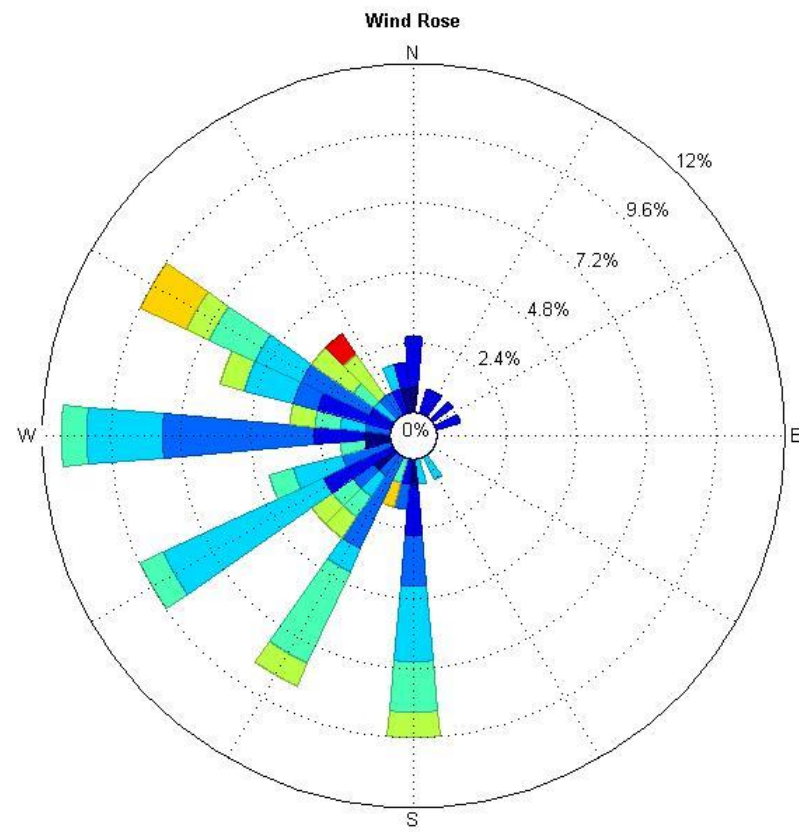


Wind Speeds in m/s



Wind direction frequency and intensity
for Keflavik when fog is present
in March-April-May from 1.952 to 1.959

Number of observations: 115

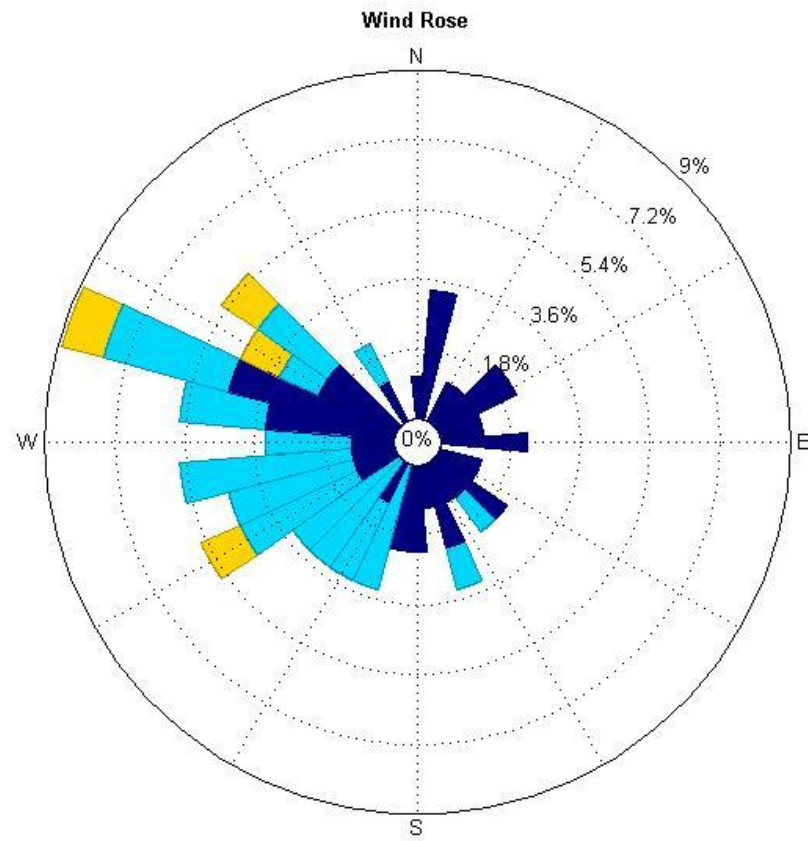


Wind Speeds in m/s

- $W_S \geq 15$
- $10 \leq W_S < 15$
- $5 \leq W_S < 10$
- $0 \leq W_S < 5$

Wind direction frequency and intensity for Keflavik when fog is present in March-April-May from 1.960 to 1.969

Number of observations: 90

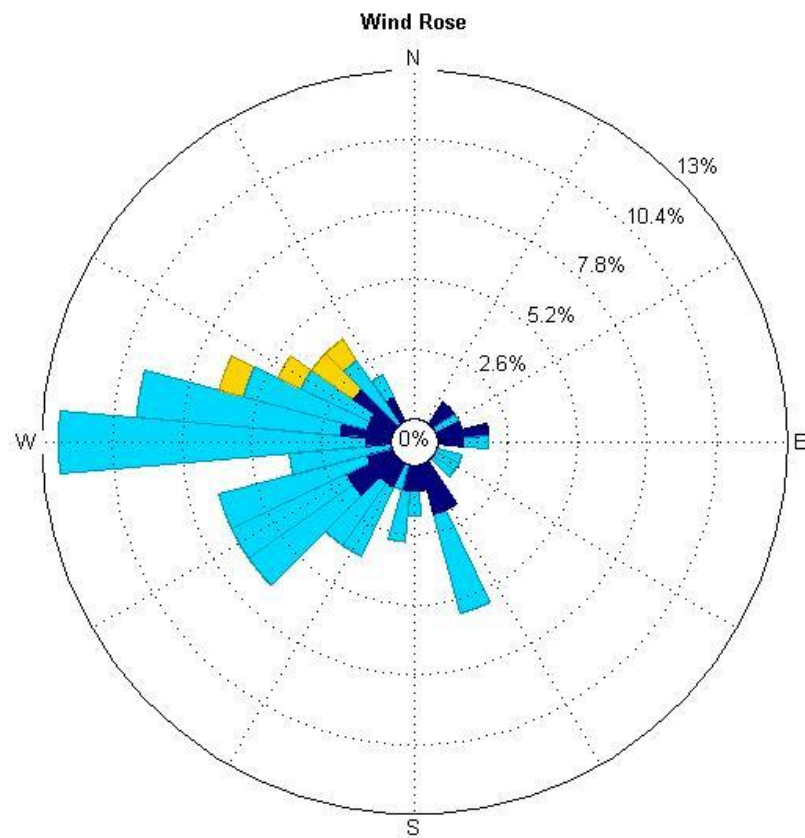


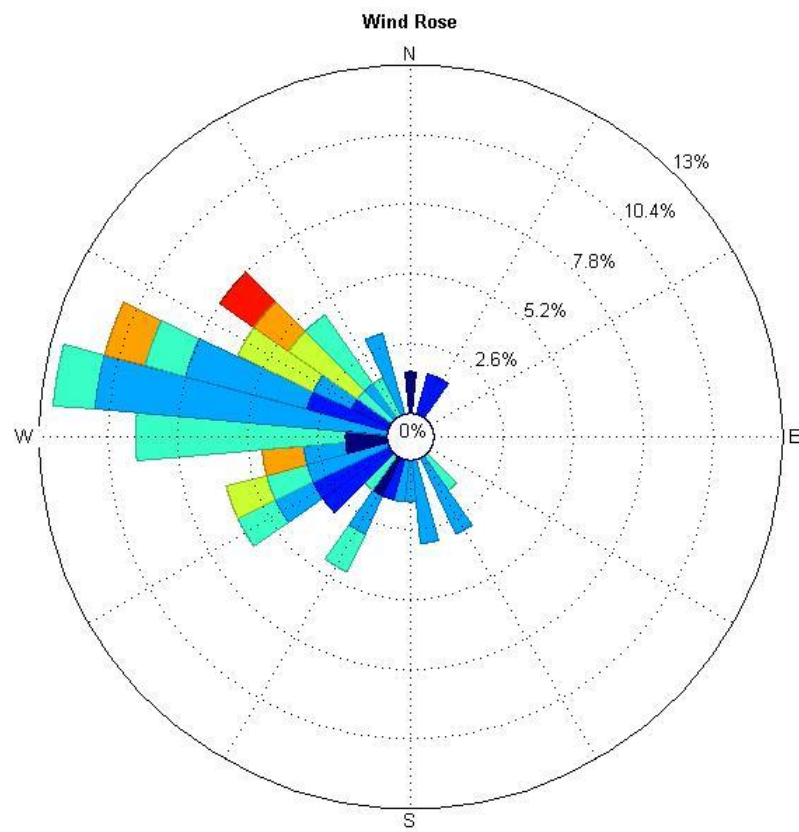
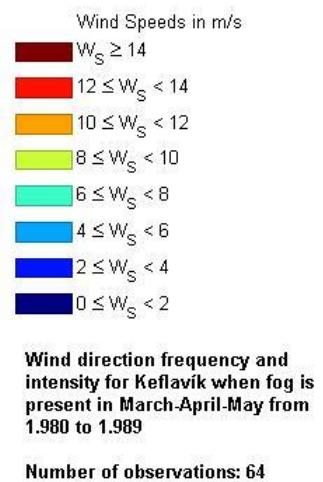
Wind Speeds in m/s

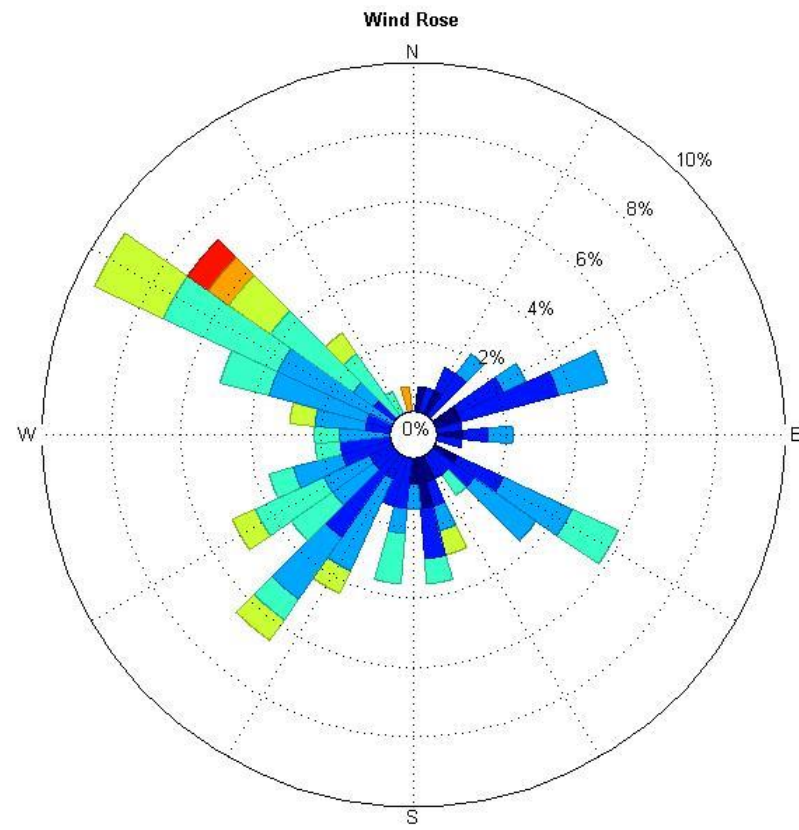
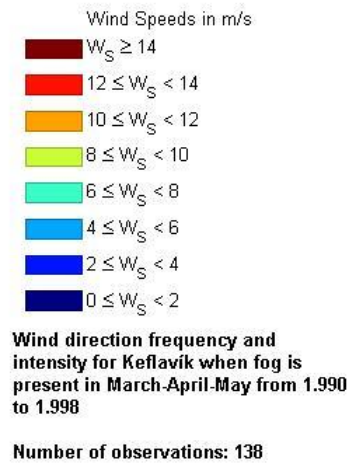
- $W_S \geq 15$
- $10 \leq W_S < 15$
- $5 \leq W_S < 10$
- $0 \leq W_S < 5$

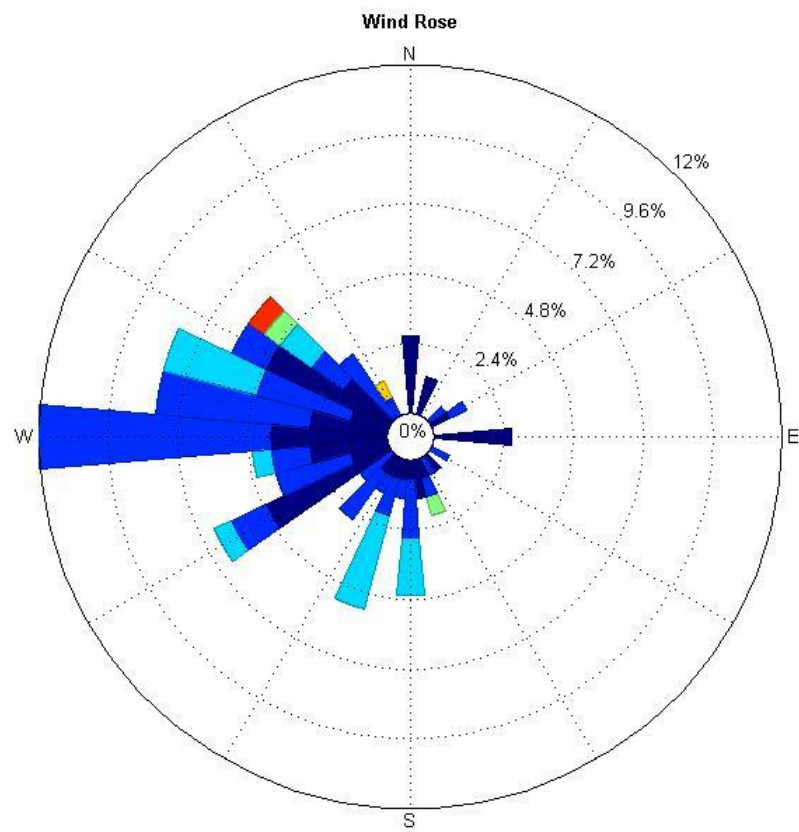
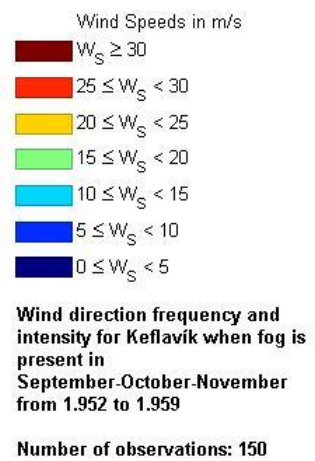
Wind direction frequency and intensity for Keflavik when fog is present in March-April-May from 1.970 to 1.979

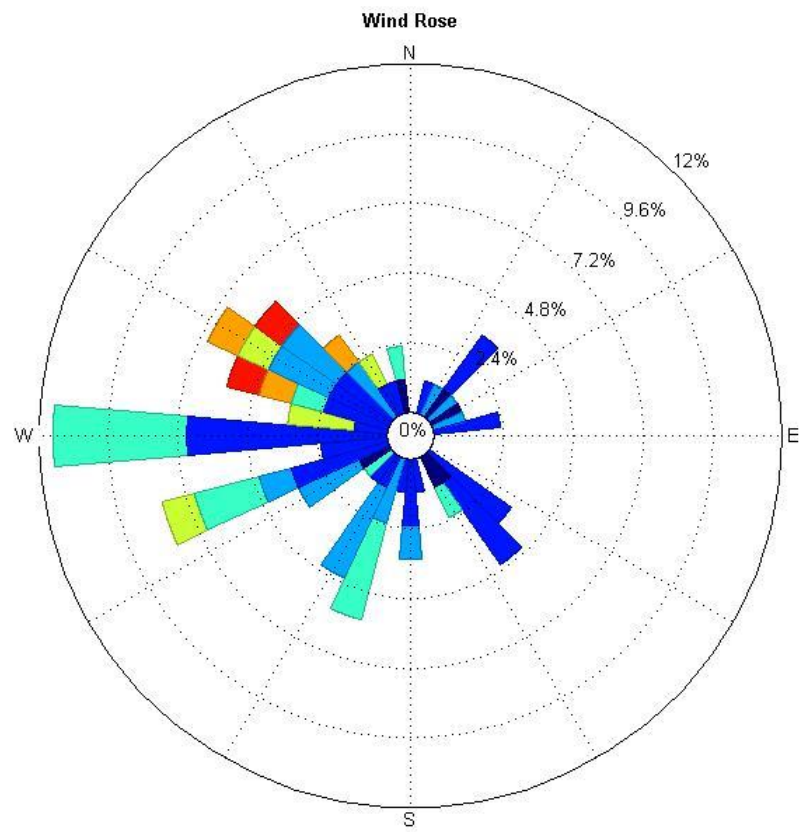
Number of observations: 105

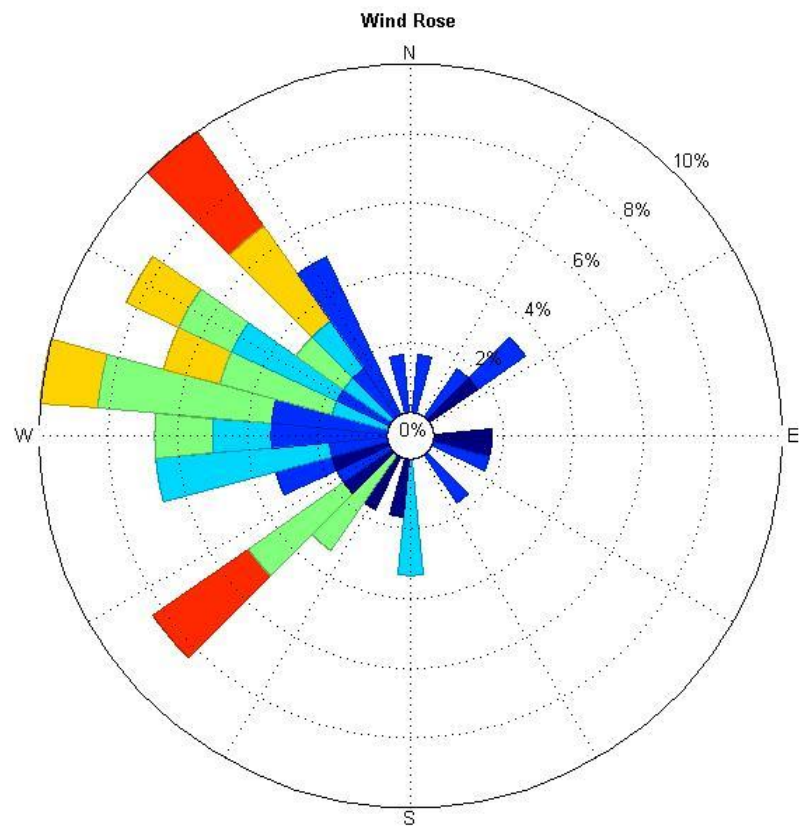




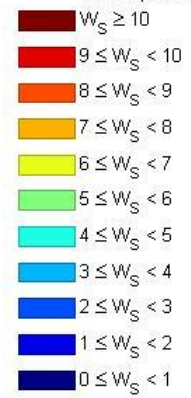






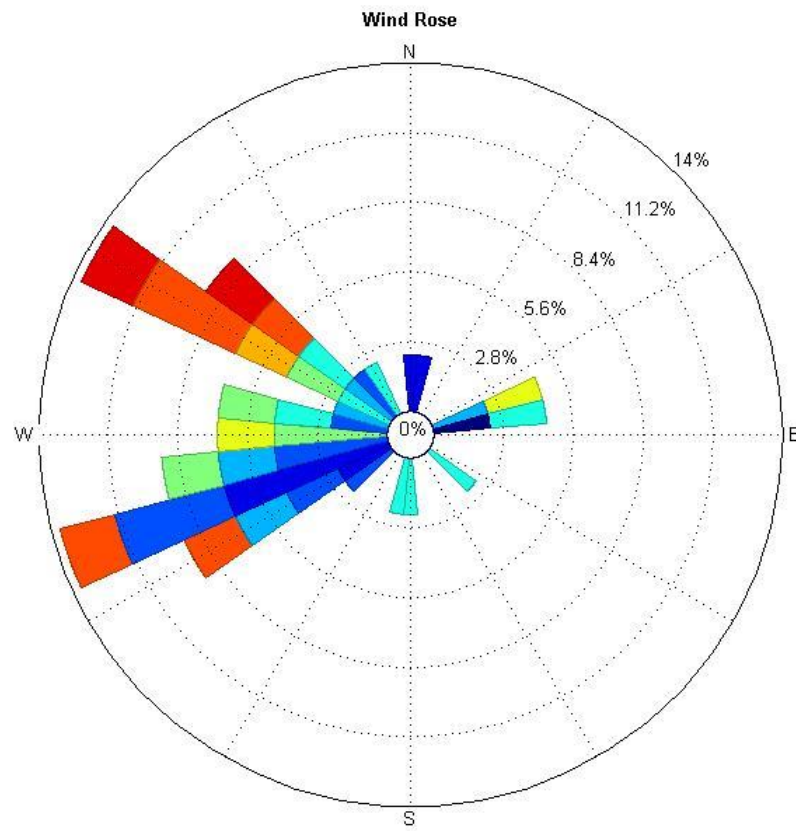


Wind Speeds in m/s



Wind direction frequency and
intensity for Keflavik when fog is
present
in September-October-November from
1.980 to 1.989

Number of observations: 44



Wind Speeds in m/s

- $W_S \geq 12$
- $10 \leq W_S < 12$
- $8 \leq W_S < 10$
- $6 \leq W_S < 8$
- $4 \leq W_S < 6$
- $2 \leq W_S < 4$
- $0 \leq W_S < 2$

Wind direction frequency and intensity for Keflavik when fog is present in September-October-November from 1.990 to 1.998

Number of observations: 95

